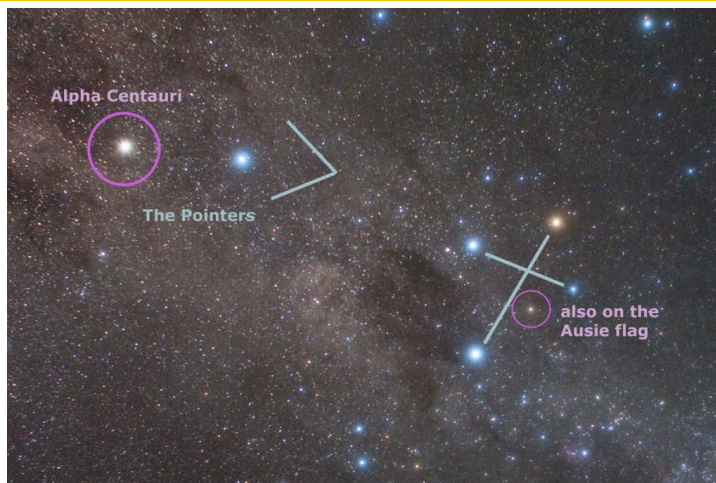
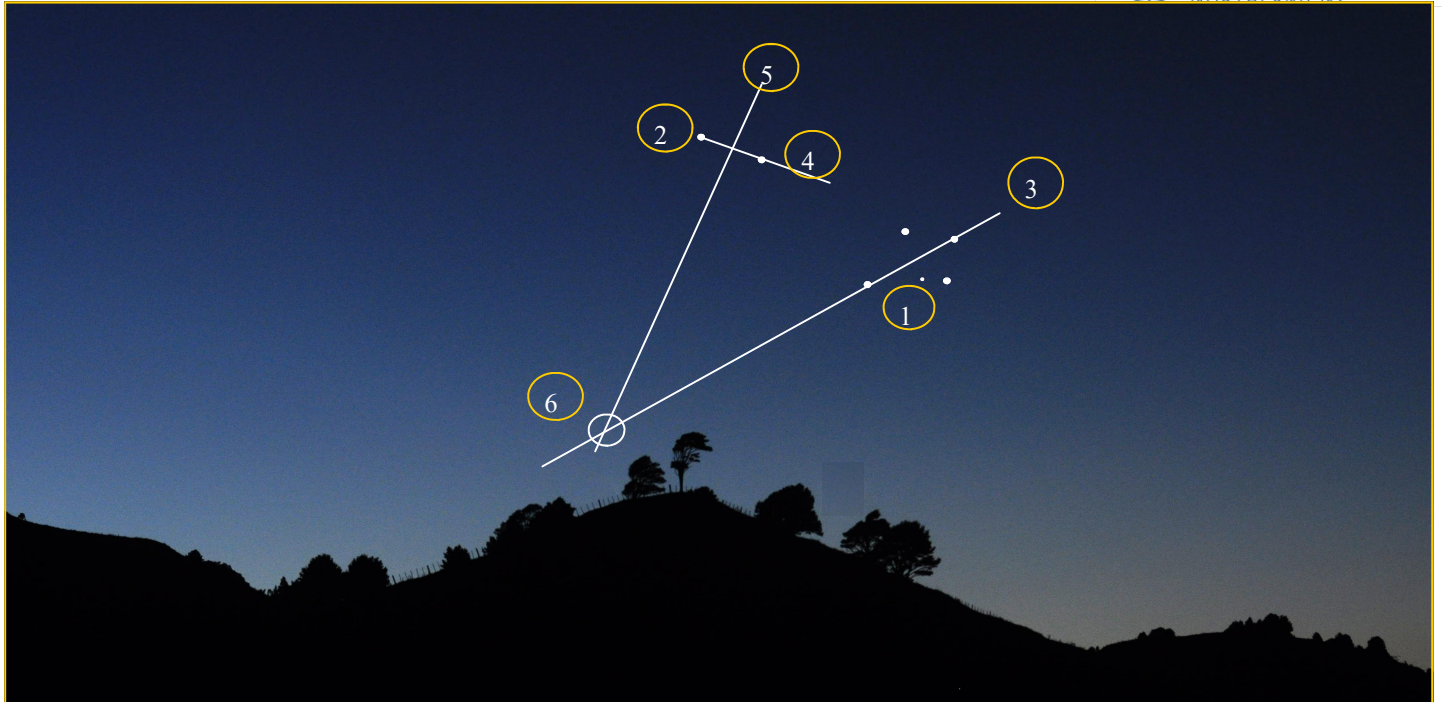


Finding South using the Southern Cross

To be used with the Tangihua lions lodge program



Once you are familiar with finding the Southern Cross, it can be used to work out the direction of south at any time of night and at any time in the year. This is because the Southern Cross never sets when viewed from most of New Zealand. The southern cross is made up of four stars. With another less bright one tucked in there. There are two others called the pointers and you need to spot them in order to use the Southern Cross to find south.

1. Find the Southern cross (1)
2. Locate the two pointers (2).
3. Draw an imaginary line through the longest part of the cross (3)
4. Draw an imaginary line between the two pointers (4)
5. Draw an imaginary line that intersects the two pointers line (4) in the middle of the line at 90 degrees to it. (5)
6. Where lines 3 and 5 intersect is the South Celestial Pole (6)

If you stand and face this point you can figure out the four points of the compass

1. South is directly in front of you
2. North is directly behind you
3. West is to your Right 90 degrees from your nose
4. East is to your Left 90 degrees from your nose